

S35 AUTOMATE WIREFREE

The Rollease Acmeda S35 wirefree motorized roller shade system offers the flexibility of two tubes and AUTOMATE | Li-ion motors to suit a wide range of applications. Featuring ARC (Automate Radio Communication), the S35 system with AUTOMATE | Li-ion motors provide an intelligent, battery powered solution. The addition of an optional solar panel provides efficient and autonomous energy harvesting capability for completely wirefree operation.

AESTHETICAL FEATURES

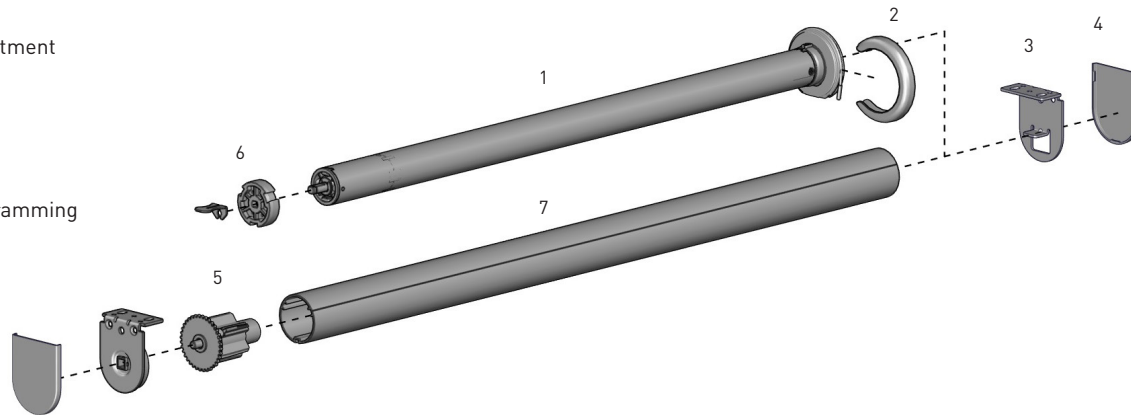
- Thinner Motor Head
- Recessed mounting hooks

PRODUCTION & ASSEMBLY FEATURES

- Greater flexibility with installation with spring loaded pin end
- Crown, drive and adapters available to suit multiple tube sizes
- Smaller Motor end deduction

FUNCTIONAL BENEFITS

- 5V Micro USB Charging
- Antennae Wire Retention Feature
- Levelling control
- Simple limit setting and adjustment
- Favorite position
- 3 operational speed settings
- 2-WAY RF communication
- ARC protocol for simple programming



NOTE:

SYSTEM INDEX

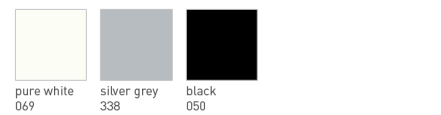
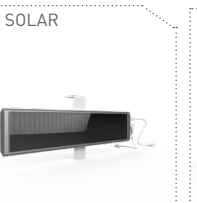
Automate Motor	
1	MT01-1325-069005 - Wire-Free Li-ion Zero Q1.1 MT01-1325-069003 - Wire-Free Li-ion Zero Q1.1 (Short) MTDCBRF25-1.1 - Li-ion 1.1
Motor Cap	
2	MT03-0502-xxx001 (Li-ion Zero Q1.1) MTCAP-25-W (Li-ion 1.1)
Easy-Lock LX Installation Brackets S35	
3	RB08-8346-xxx030
VX/LX Bracket Cover Caps S35	
4	RB08-4141-xxx030
Easy-Lock AC Auto Idler S35	
5	RB08-0501-xxx034
AUTOMATE Crown & Drive Set 25mm	
6	MTCRDR-25-S35
T-Spline Aluminum Tubes S35	
7	RB93-0333-000580 - STD RB93-0335-000580 - HD

= Size
xxx = Color

SYSTEM UPGRADES

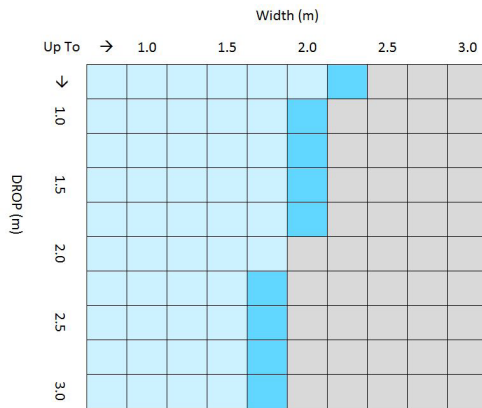
- CASSETTE 75/90
- MOUNTING RAIL

CONTROL OPTIONS CHARGERS PRODUCT OPTIONS COLOUR RANGE



SPECIFICATIONS

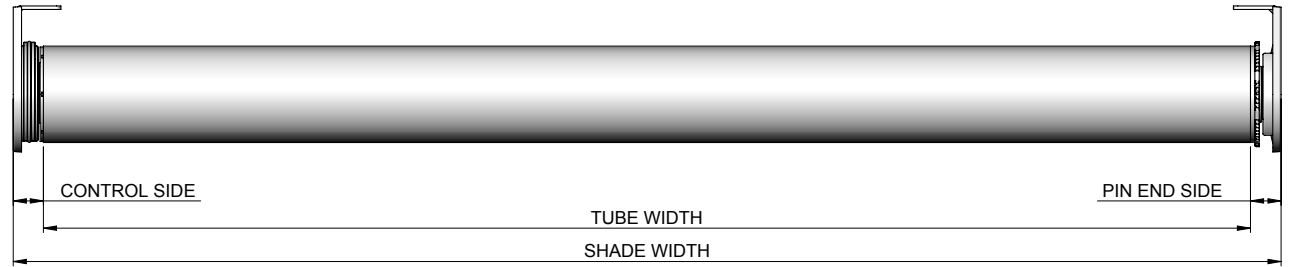
1.1Nm SYSTEM CAPACITY



Fabric Thickness: 0.024" [0.60mm]
 Fabric Density: 12.39oz/yd² [420gsm]
 Weight Bar: D30 Silent Medium Aluminium Bottom Rail

CONTROL	TUBE
S35 WIREFREE	S35 HD / STD
	S35 HD
	OUTSIDE SPECIFICATIONS

DEDUCTION CHART



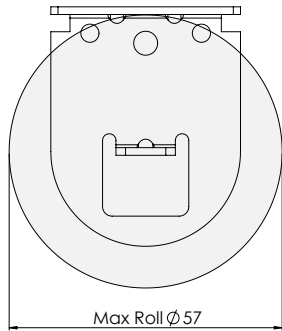
MOTOR	TORQUE	MINIMUM SHADE WIDTH [bracket covers]	LIGHT GAP			
			IDLER [bracket covers]	IDLER [without covers]	CONTROL [bracket covers]	CONTROL [without covers]
MT01-1325-069003	1.1Nm	650mm [26"]*	14mm [0.55"]	13mm [0.51"]	13mm [0.51"]**	12mm [0.47"]
MT01-1325-069005	1.1Nm	575mm [23"]*	14mm [0.55"]	13mm [0.51"]	13mm [0.51"]**	12mm [0.47"]
MTDCBRF25-1.1	1.1Nm	350mm [14"]*	14mm [0.55"]	13mm [0.51"]	16mm [0.63"]	15mm [0.59"]

* Subtract 2mm [1/16"] for with-out bracket covers

** Add 1mm [1/32"] for use with motor Cap

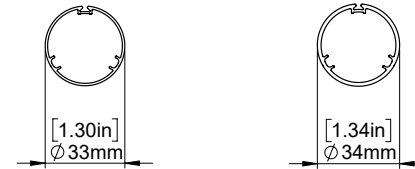
TUBE DEDUCTION = SHADE WIDTH - (CONTROL END LIGHT GAP + PIN END LIGHT GAP)

MAX ROLL



BRACKET	MAX ROLL SIZE
RB08-8346-xxx030	57mm

TUBE SPECS.



S35 STD Tube

Code: RB93-0333-000580
 w. tape RB93-6333-000580
 OD: 33mm
 Length 5.8m

S35 HD Tube

Code: RB93-0335-000580
 w. tape RB93-6335-000580
 OD: 34mm
 Length 5.8m

MOTOR	MAX LIFTING CAPACITY		MAX DROP*
	S35 STD	S35 HD	S35
1.1Nm	5.5kg	5.3kg	2.7m

* Exceeding this value may cause fabric tracking issues